

## Emporia State University Wireless Setup Guide (Windows XP)

1. Open the Start Menu and Select Control Panel
2. In Category View:
  - a. Select Network and Internet Connections



- b. In the bottom area select Network Connections

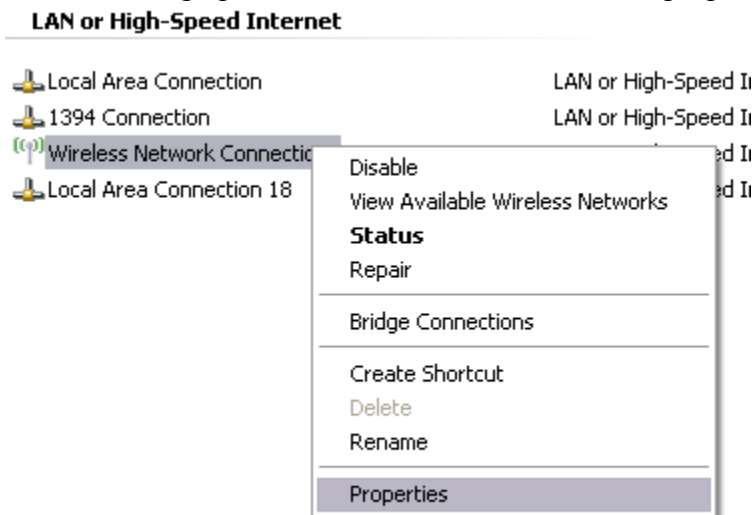


In Classic View:

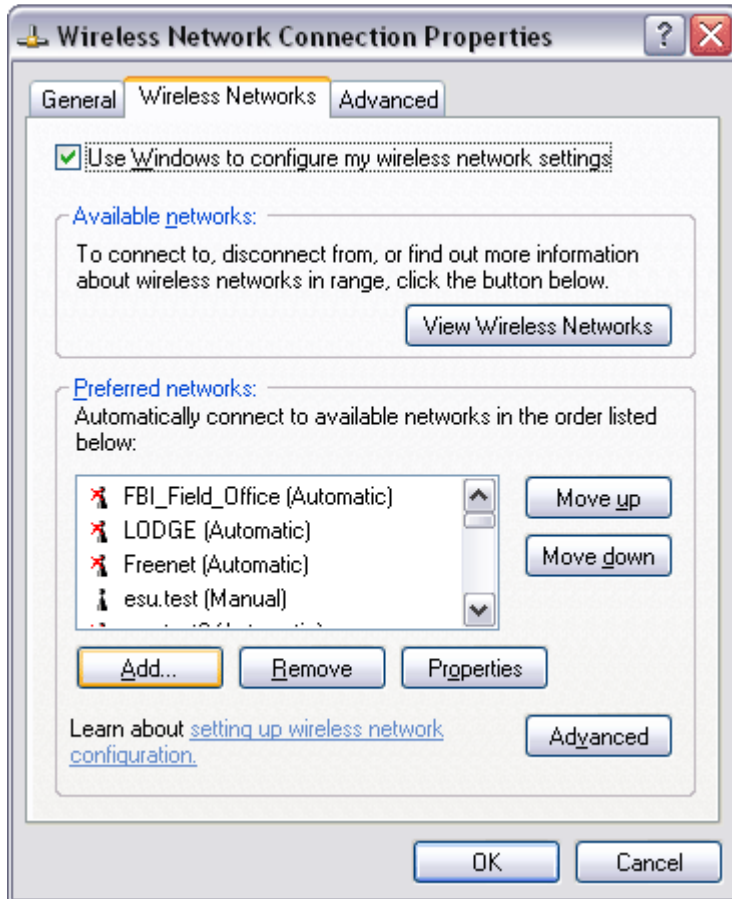
- a. Open Network Connections



3. Select Wireless Network Connection and Click with your Right Mouse Button
  - a. Select Properties
  - b. This will bring up the wireless network connection properties window



4. Select the Wireless Networks Tab
5. Make sure “Use Windows to configure my wireless network settings” is checked.
6. Click the Add... Button



7. On the Association Tab:
  - a. Enter ESU in the Network name (SSID) field
  - b. Under Network Authentication select "WPA"
  - c. Under Data Encryption select "TKIP"

The image shows a screenshot of the 'Wireless network properties' dialog box in Windows. The 'Association' tab is selected. The 'Network name (SSID)' field contains the text 'ESU'. Under the 'Wireless network key' section, there is a message: 'This network requires a key for the following:'. Below this, 'Network Authentication' is set to 'WPA' and 'Data encryption' is set to 'TKIP'. There are empty text boxes for 'Network key' and 'Confirm network key'. The 'Key index (advanced)' is set to '1'. A checkbox labeled 'The key is provided for me automatically' is checked. At the bottom, there is an unchecked checkbox labeled 'This is a computer-to-computer (ad hoc) network; wireless access points are not used'. The 'OK' and 'Cancel' buttons are at the bottom right.

**Wireless network properties**

Association Authentication Connection

Network name (SSID): ESU

Wireless network key

This network requires a key for the following:

Network Authentication: WPA

Data encryption: TKIP

Network key:

Confirm network key:

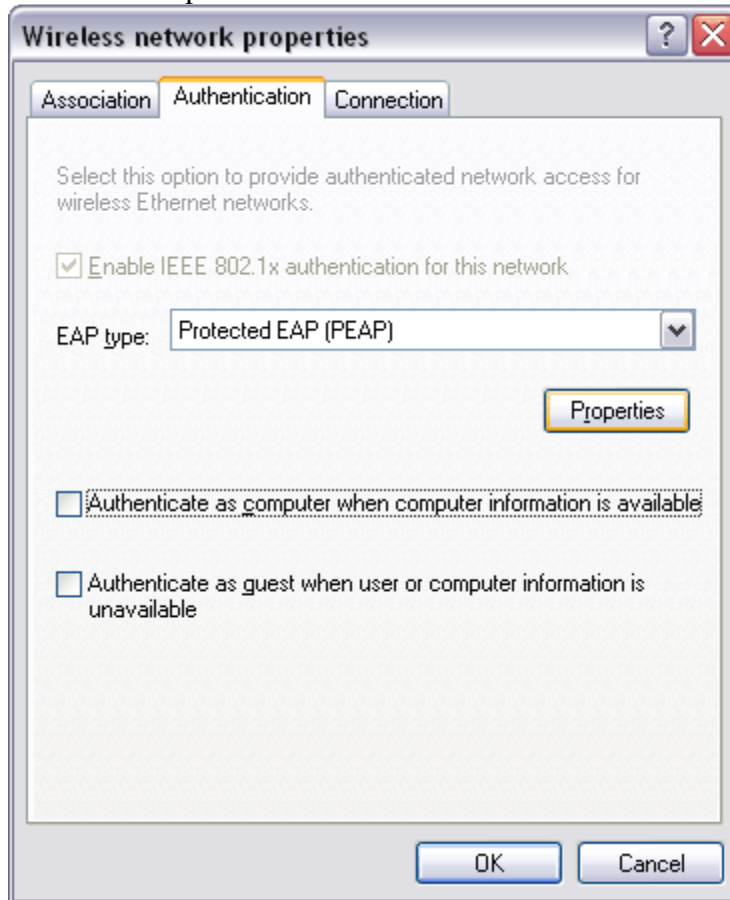
Key index (advanced): 1

The key is provided for me automatically

This is a computer-to-computer (ad hoc) network; wireless access points are not used

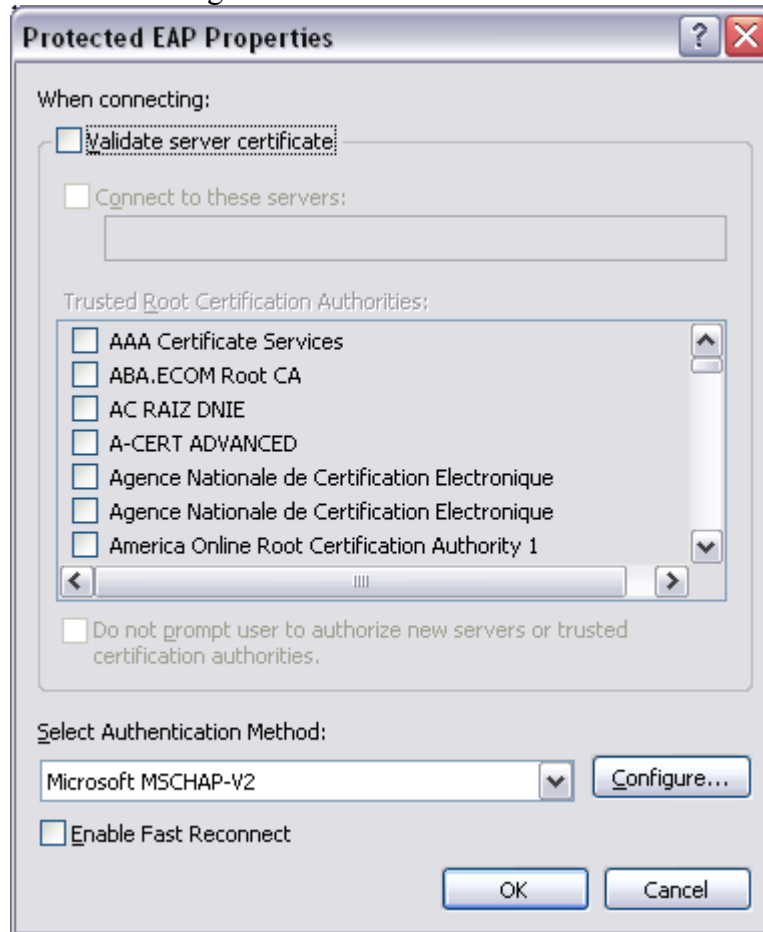
OK Cancel

8. Click on the Authentication Tab:
  - a. Under EAP type select “Protected EAP (PEAP)”
  - b. Select the Properties Button



- c. On the Protected EAP Properties Window
  - i. Remove the check mark next to Validate Server Certificate
    1. You will fail authentication if this Box remains Checked
    2. ESU Strives to use the highest security possible when authenticating its users. We do have a certificate to encrypt your user credentials. Microsoft Windows does not list it as a valid certificate. If you have questions about this process then please contact the TCS HelpDesk at 341-5555.
  - ii. Under Select Authentication Method select Microsoft MSCHAP-V2 NOTE: On some tablets, the Microsoft authentication method is listed as “Secured password (EAP-MSCHAP v2).
  - iii. Remove the check mark in the box next to “Enable Fast Reconnect”

- iv. Click the Configure... button

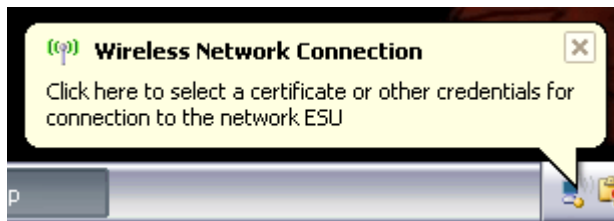


- v. Remove the Check mark from the Box next to “Automatically use my Windows Logon name and password (and domain if any)”
1. Leaving this box checked could cause you to fail authentication



- vi. Click Ok
- vii. Click Ok
- d. Remove all check marks from the other selections on this tab

9. Click on the Connection Tab:
  - a. The Automatic connection option will allow you to connect to our network whenever it is detected by your wireless device. If you do not wish this to happen then you may remove the check mark in the box.
10. Click OK
11. Click OK
12. Click Close
13. Once the “ESU” Wireless Network is discovered by your wireless card, you will see a little yellow pop up (in the lower right-hand corner of your screen) stating “Click here to select a certificate or other credentials for connection to the network ESU”.



14. Click This Pop-up
15. Enter your ESU User Name (used for email and Buzz In)
16. Enter your Password
17. Leave the “Logon domain:” field blank
18. Click OK

A dialog box titled "Enter Credentials" with a close button in the top right corner. The dialog box contains a graphic of two laptops with a globe between them. Below the graphic are three input fields: "User name:" with the text "Your Username", "Password:" with a masked password of 12 dots, and "Logon domain:" which is empty. At the bottom of the dialog box are two buttons: "OK" and "Cancel".

19. You should now be connected to the Campus Wireless Network



20. If you have any questions, or require assistance, please contact the TCS HelpDesk at 341-5555 during office hours.