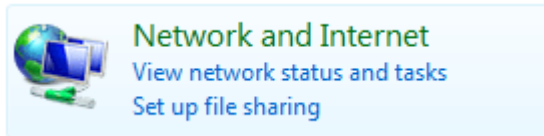
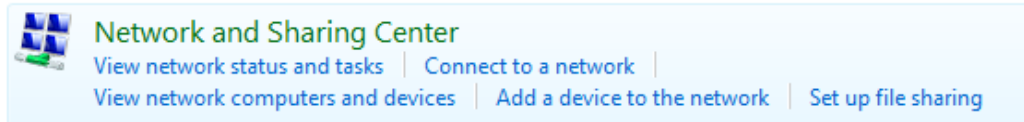


## Windows Vista Wireless Setup Instructions

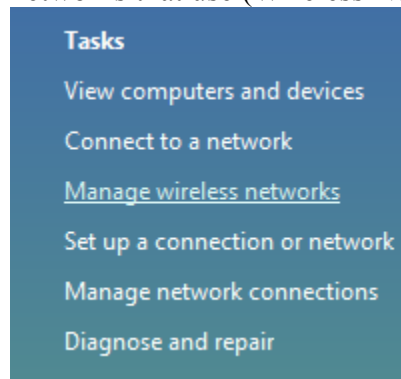
1. Click the Windows Menu and Select Control Panel
2. Select Network and Internet

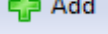


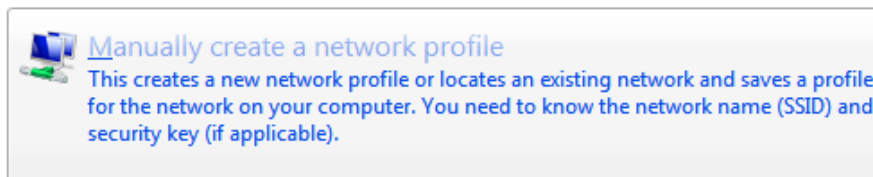
3. Select Network and Sharing Center



4. There is a **Tasks** menu on the left hand side.
  - a. Select **Manage Wireless Networks**. This will bring up the “Manage wireless networks that use (Wireless Network Connection)” menu

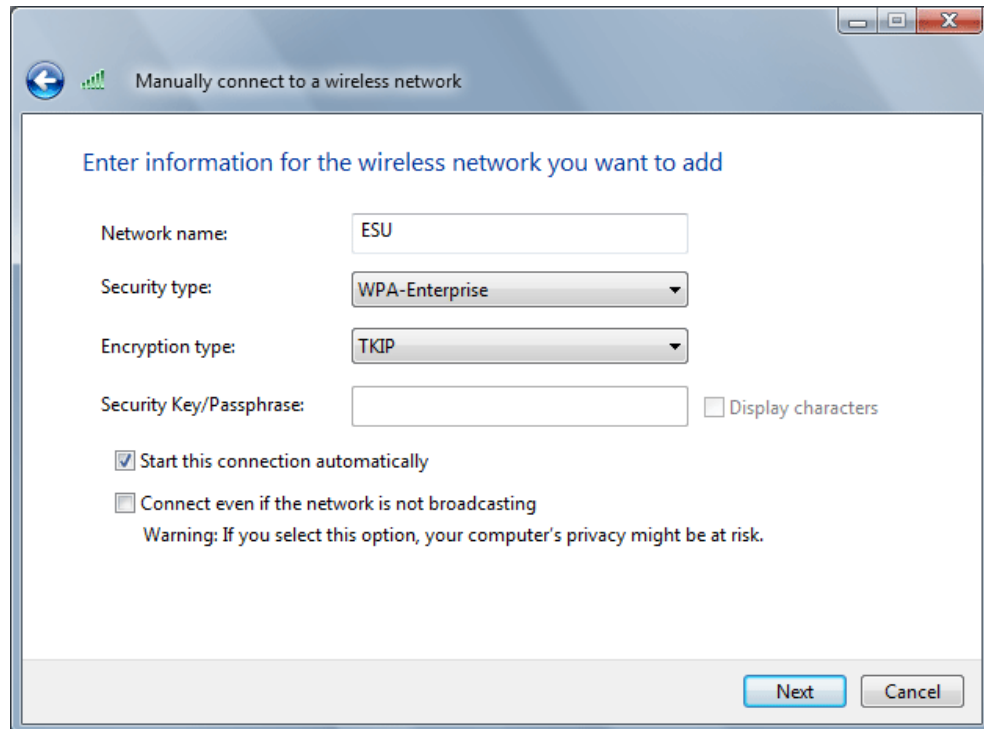


5. Select **Add** 
6. Select **Manually create a network profile**



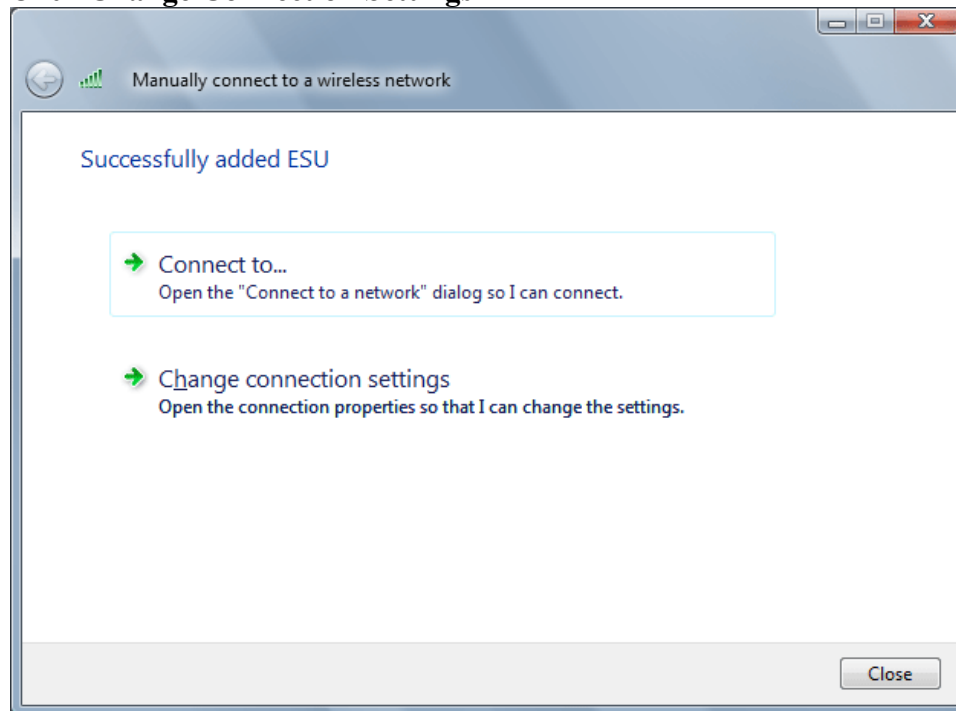
7. On the “Enter information for the wireless network you want to add” screen enter the following options:
  - a. Enter ESU for the network name. Please type it in all capitals.
  - b. Under Security type select WPA-Enterprise
  - c. Under Encryption Type select TKIP

d. Click Next



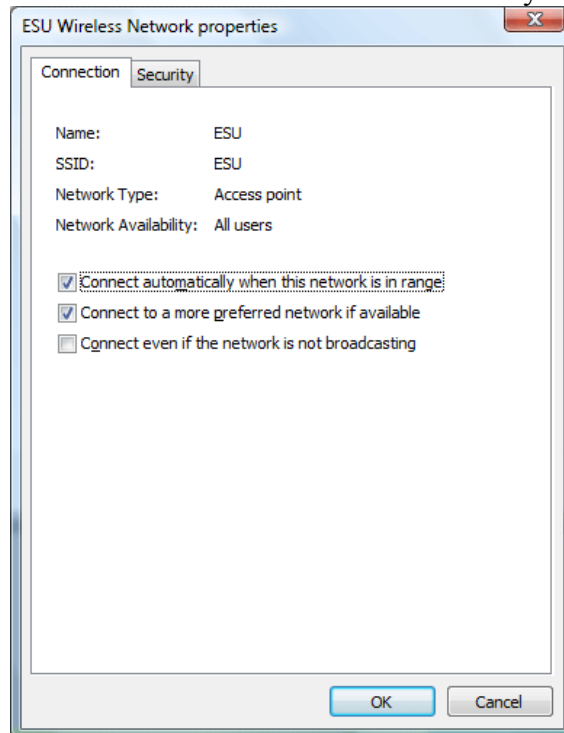
8. The next screen will say “Successfully added ESU”, However, some changes are needed to make the connection work correctly on our network.

a. Click **Change Connection Settings**



9. You should see the ESU Wireless Network properties window

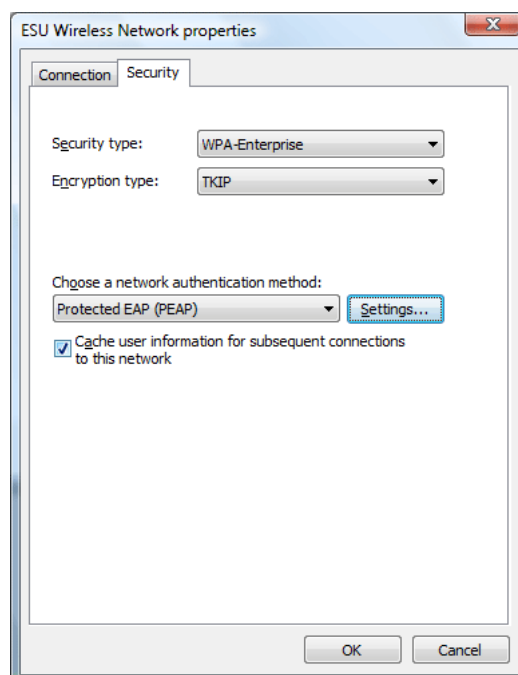
- a. On the **Connection** Tab do not make any changes



- b. Select the **Security** Tab

- i. Next to “Protected EAP (PEAP)” select **Settings...**

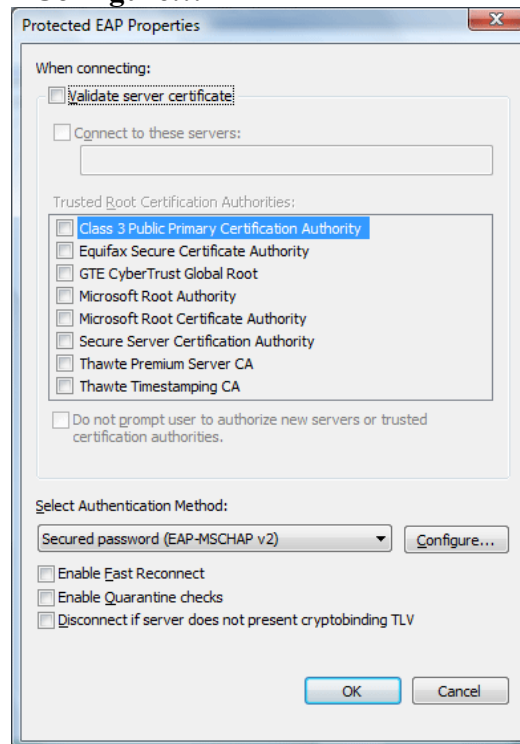
1. **Note:** There is an option that states “Cache user information for subsequent connections to this network”. If you choose this option it will remember your user name and password for future logins. When your password expires you will need to come here to remove this check mark so that you can enter your new password. Once you enter your new password, feel free to use this option again.



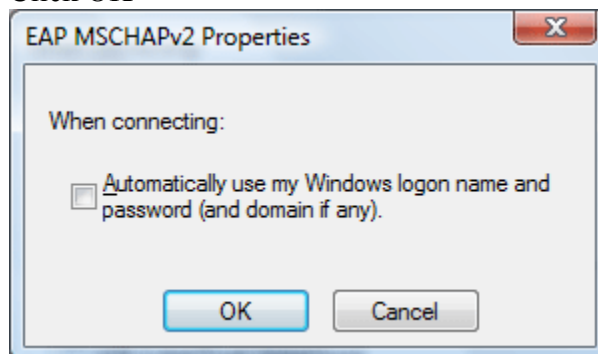
- c. On the Protected EAP Properties window:

- i. Remove the check mark next to Validate server certificate.

1. NOTE: ESU strives to use the highest security possible when authenticating its users. We do have a certificate to encrypt your user credentials. Microsoft Windows does not list it as a valid certificate. If you have questions about this process then please contact the TCS HelpDesk at 341-5555.
- ii. Under select authentication method:
  1. Remove the check mark next to Enable Fast Reconnect
    - a. This can cause you to fail authentication.
  2. Next to “Secured password (EAP-MSCHAP v2)” select **Configure...**



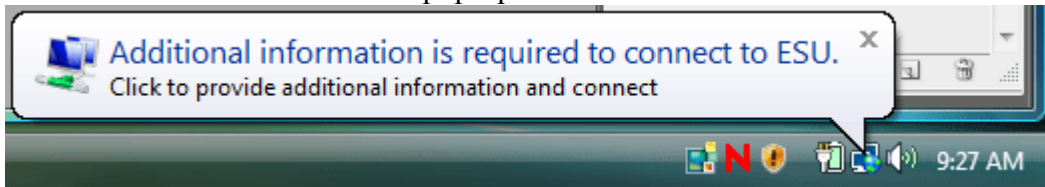
- iii. Remove the check mark next to “Automatically use my Windows logon name and password (and domain if any)”
  1. If left checked, This will cause you to fail authentication
  2. Click OK



- iv. Click OK
- v. Click OK
- vi. Close the “Manage Wireless Networks” window

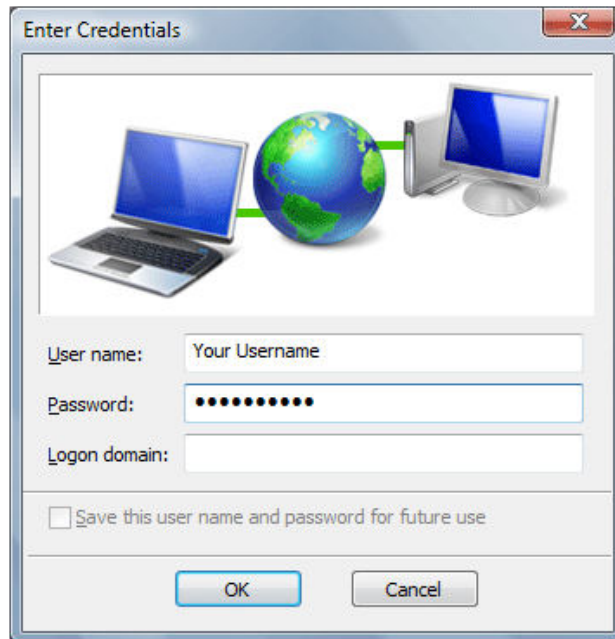
- vii. Once the “ESU” Wireless Network is discovered by your wireless card, you will see a pop-up in the lower right hand corner stating “Additional information is required to connect to ESU”

- 1. Click this pop-up



- viii. You will be prompted to enter credentials:

- 1. Enter your ESU User Name (used for email and Buzz In)
- 2. Enter your Password in the appropriate field
- 3. Leave the **Logon Domain** field blank
- 4. Click OK



- d. Windows Vista will now negotiate the type of connection. Nothing will pop up on your screen at this time.
  - i. If your authentication fails, you will see the pop-up mentioned above re-appear. Please try to login again before calling for assistance.
  - ii. Once you are successfully connected, there will be a small icon in the lower right corner of your screen.



- 10. You should now be connected to the ESU Wireless Network. If you have any questions, or require assistance, please contact the TCS HelpDesk at 341-5555