

Emporia State University Wireless Quick Start Setup Guide (Intel ProSet Tools)

All images referenced are located at the end of this document

1. Open your Intel Pro Set/Wireless Management Utility
2. Select the network “ESU” and Click Connect (*Image 1*)
 - a. This will bring up the “Configure Wireless Settings – ESU” screen
3. On the “Configure Wireless Settings – ESU” screen (*Image 2*)
 - a. Enter ESU in the Profile Name field
 - b. Enter ESU in the Wireless Network Name (SSID) field
 - c. Click Next
4. It will attempt to detect our security settings and will fail. (*Image 3*)
 - a. Click Next to continue
5. On the Security Settings Tab: (*Image 4*)
 - a. Select “Enterprise Security”
 - b. Under Network Authentication select “WPA – Enterprise”
 - c. Under Data Encryption select “TKIP”
 - d. Under Authentication Type select “PEAP”
 - e. Under Authentication Protocol select “MS-CHAP-V2”
 - f. Under User Credentials select “Prompt me each time I connect”
 - i. NOTE: You can enter your credentials here if you’d like. However, when your password changes, you will need to change your password in this screen. Please note where this is located as you will need to enter your new password once you change it.
 - g. In the Roaming Identity field, delete anything listed
 - h. Click Next
6. Security Settings Tab Part 2 (*Image 5*)
 - a. Remove the check mark next to “Validate Server Certificate” located in the middle of the screen
 - i. NOTE: To ensure the highest security, all log-in credentials are being encrypted using a Secure Server Certificate. This option is not needed on our network and can cause authentication to fail.
 - b. Click Next
7. Click Ok to continue Connecting
8. Once our network is discovered, you will be prompted for your user credentials (*Image 6*)
 - a. Do not enter anything for Roaming identity
 - b. Enter your ESU username (used for email, Buzz In)
 - c. Leave the Domain Field Blank
 - d. Enter your ESU Password
9. Congratulations. You should now be connected to the Emporia State University Wireless Network.
 - a. If you have any questions or problems, please contact the TCS HelpDesk, during office hours, at 341-5555.

Photo 1

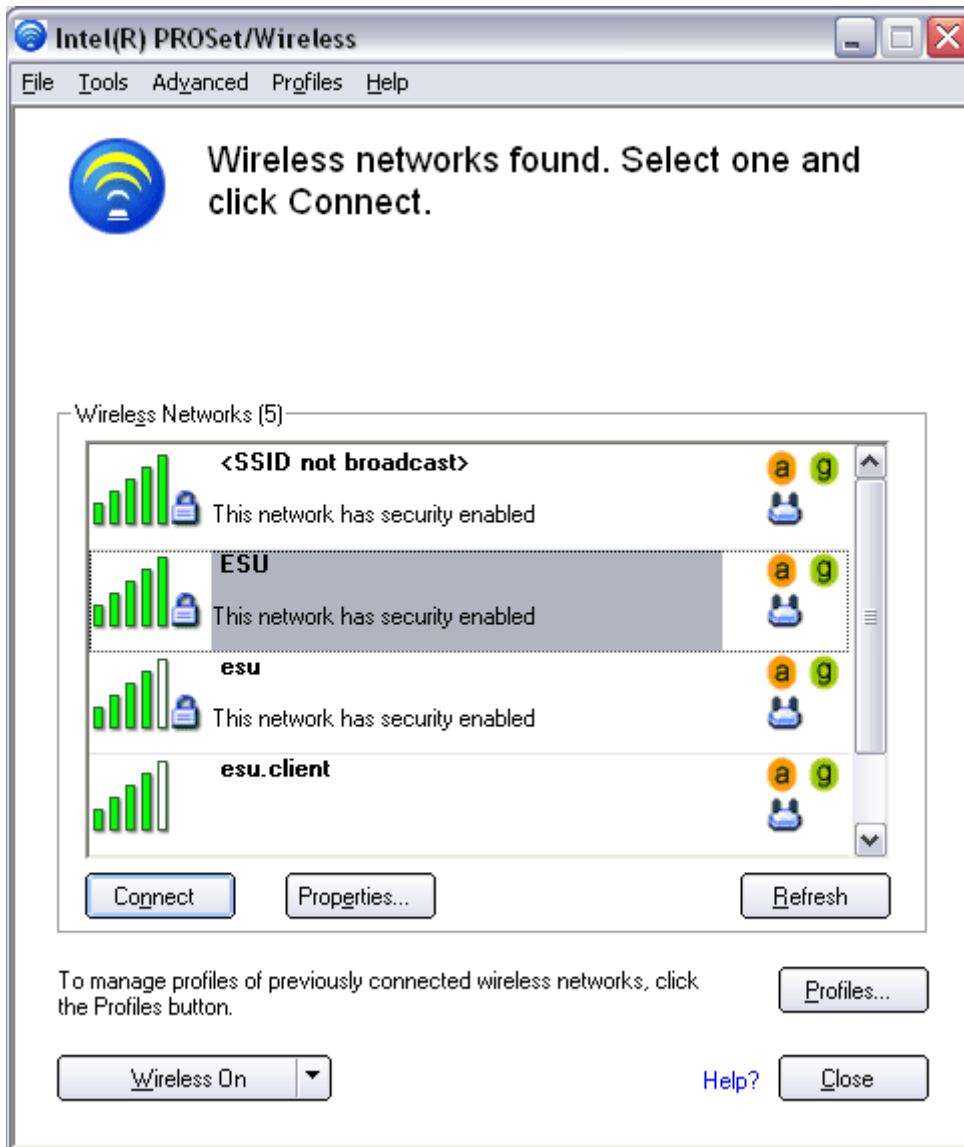


Photo 2

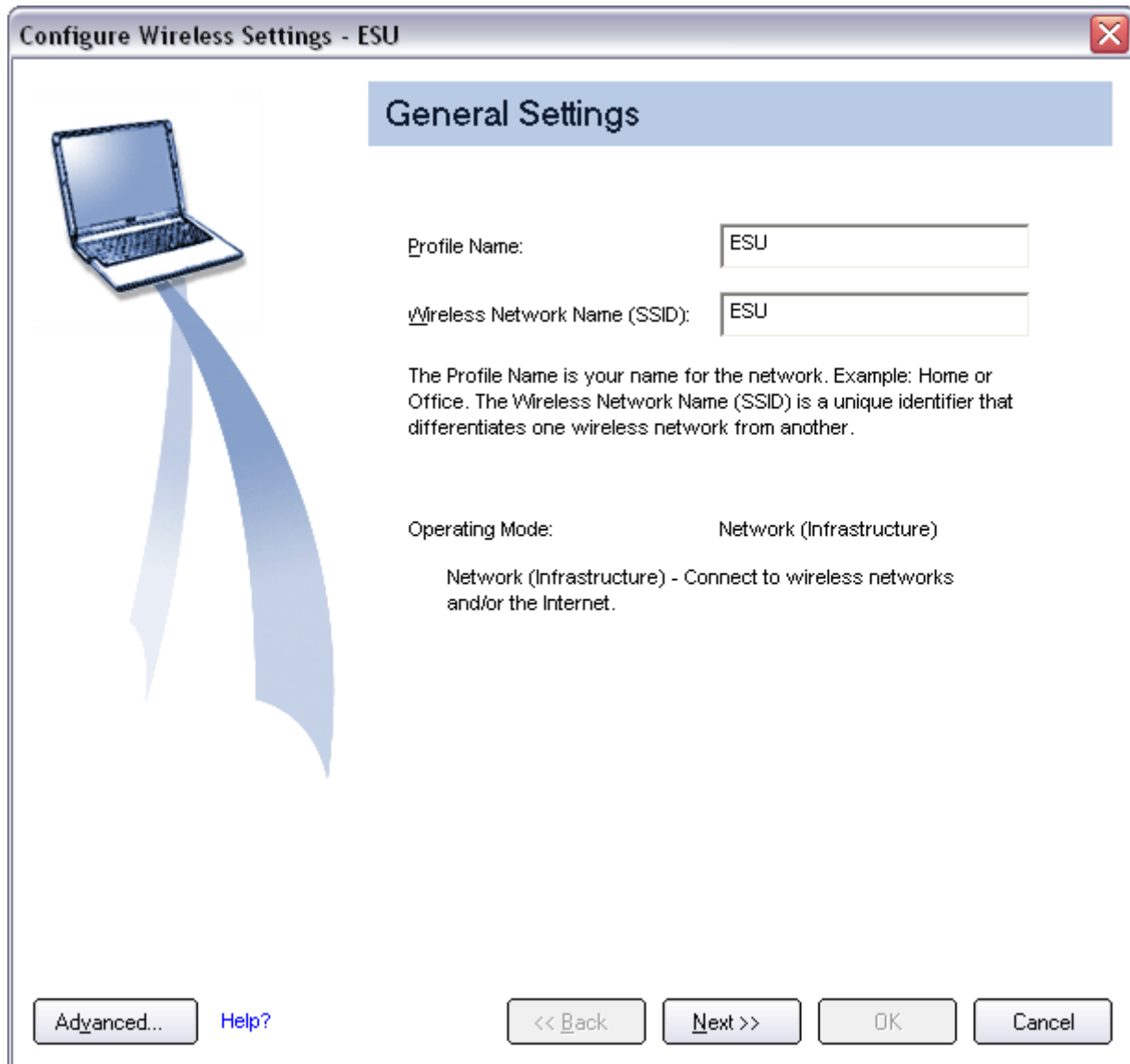


Photo 3

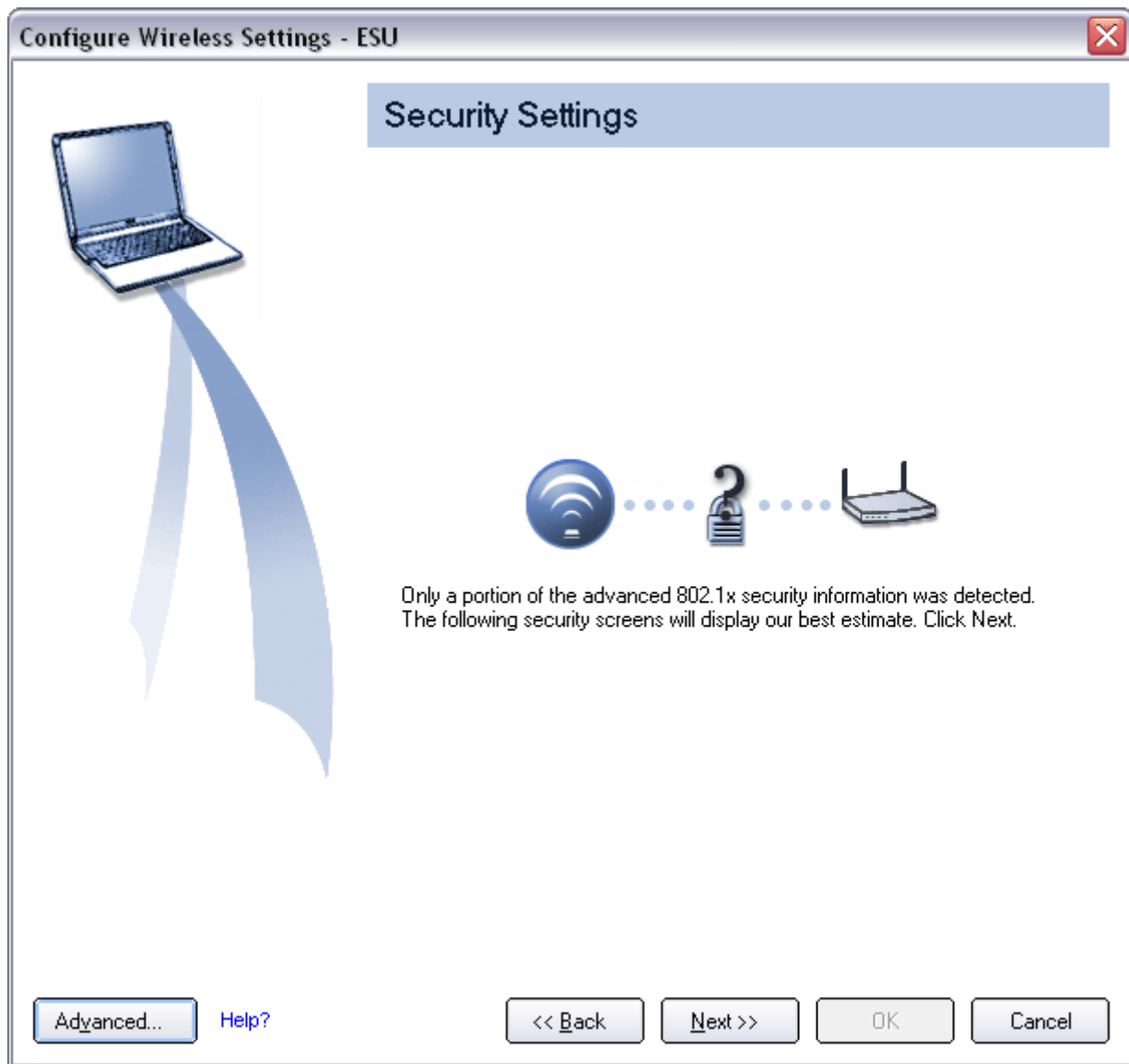


Photo 4

Configure Wireless Settings - ESU

Security Settings

Personal Security Enterprise Security

Network Authentication: WPA - Enterprise

Data Encryption: TKIP

Enable 802.1x

Authentication Type: PEAP Cisco Options...

Step 1 of 2: PEAP User

Authentication Protocol: MS-CHAP-V2

User Credentials: Prompt each time I connect

User Name:

Domain:

Password:

Confirm Password:

Roaming Identity:

Advanced... Help?

<< Back Next >> OK Cancel

Photo 5

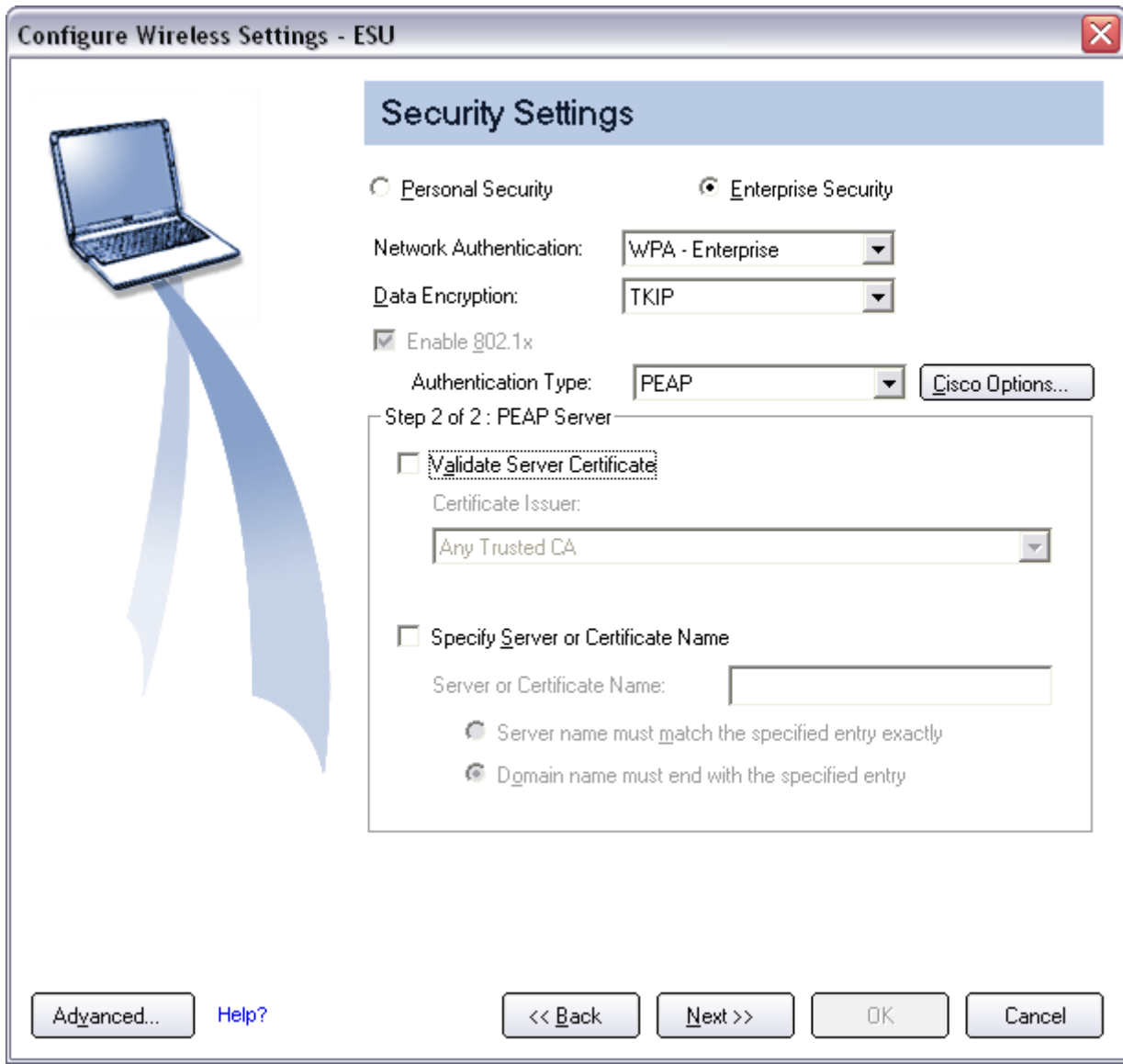


Photo 6

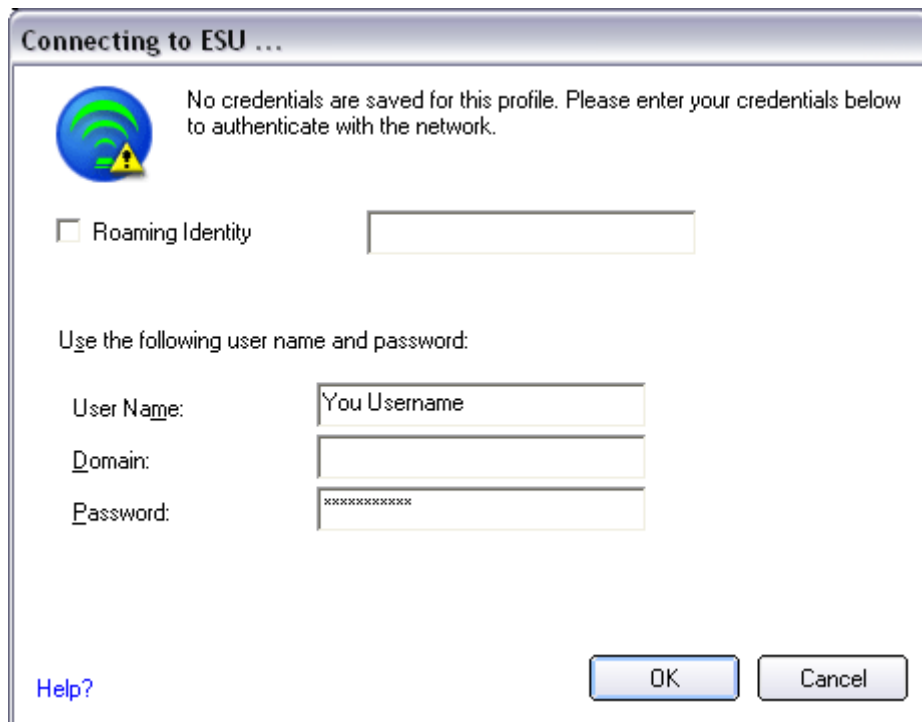


Photo 7

